

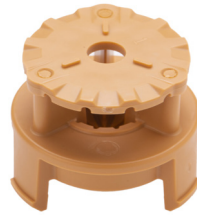


WATER APPLICATION SOLUTIONS FOR CENTER PIVOT IRRIGATION

LEPA



TAN PLATE IN 3030 SERIES
CONFIGURATION IN BUBBLE-WIDE MODE



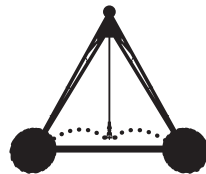
LEPA SOLUTIONS

THE TAN BUBBLE-WIDE PLATE IS NOW AVAILABLE FOR LOW ENERGY PRECISION APPLICATIONS IN THE 6-10 PSI RANGE (0.4-0.7 BAR) USING NOZZLE SIZES #9-#50. THIS CONFIGURATION CREATES A WIDER DOME OF WATER THAN STANDARD STRAIGHT DOWN BUBBLERS PROVIDING FULL COVERAGE IRRIGATION. THIS PATTERN TREATS THE SOIL BETTER AND CAN INCREASE EFFICIENCIES BY REDUCING WIND DRIFT AND EVAPORATION VERSUS STANDARD SPRAY PLATES. SPACE FROM 30" TO 60".

D3030 BUBBLE-WIDE PERFORMANCE (DIAM. @ 2' (0.6M))

Nozzle #	6 psi (0.4 bar)	10 psi (0.7 bar)
9	6' (1.8 m)	6' (1.8 m)
14	8' (2.4 m)	9' (2.7 m)
24	10' (3.0 m)	11' (3.4 m)
30	12' (3.6 m)	14' (4.3 m)
42	16' (4.9 m)	18' (5.5 m)
50	16' (4.9 m)	20' (6.1 m)

FOR DROPS



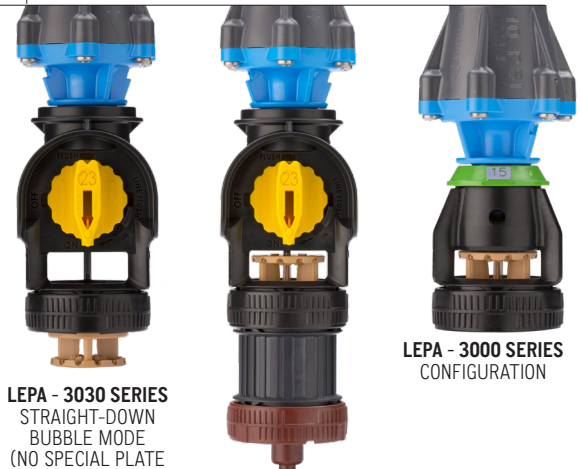
The Nelson Sprayhead can be used in LEPA applications by incorporating the Tan "Bubble-Wide" Plate. Works for both 3030 Series and 3000 Series configurations. LEPA can also be adapted to the Accelerator with the sprinkler converter.

It's important to use LEPA where it fits. While offering the advantages of low pressure operation and minimal water loss due to canopy evaporation and wind drift, LEPA is limited to its areas of application.

Considerations include:

- SOILS.
- The SPEED of the pivot may need to be adjusted to prevent runoff
- Most effective on SLOPES less than 1%.
- You may need to substitute MOVING STREAM sprinklers for inner spans to control over-watering and nozzle plugging.
- PRESSURE REGULATORS are generally a necessity for good uniformity of LEPA nozzle discharge.
- With row crops, PLANTING IN A CIRCLE generally recommended.

3030 Series configuration deposits water directly below the sprinkler without wetting plant canopy.



LEPA - 3030 SERIES
STRAIGHT-DOWN
BUBBLE MODE
(NO SPECIAL PLATE
OR CLIP REQUIRED)

LEPA - 3030 SERIES
CONFIGURATION +
SPRINKLER CONVERTER
READY FOR
ACCELERATOR MODE

LEPA - 3000 SERIES
CONFIGURATION





LEPA

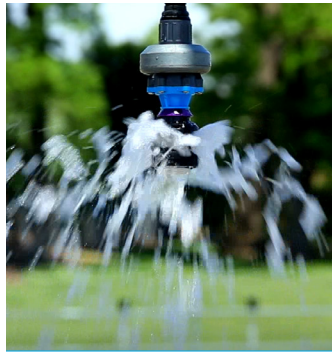
Low Energy/Elevation
Precision Application



GERMINATE
IRRIGATE
CHEMIGATE
BUBBLE
DRAG

U3030
+ HOSE
DRAG

BUBBLER
MODE WITH
SPRINKLER
CONVERTER



LEPA (3000 SERIES)

Transform D3000 into LEPA Bubbler by
inverting D3000 Cap and attaching
Bubbler Clip to the D3000 Body.
(Not to be used with second spray plate.)



HD3000 HOSE
DRAG ADAPTER

Use the 3/4" hose drag
adapter on the 3000
Series to apply a hose
drag or a drag sock.



LESA

Low Energy/Elevation
Spray Application



SPRAY
OR
ORBITING
SPRINKLERS

D3030
SPRAYHEAD

SPRAY
MODE WITH
SPRINKLER
CONVERTER



LENA

Low Energy/Elevation
NELSON ADVANTAGE



MOVING
SPRINKLERS:
ROTATOR
ACCELERATOR
SPINNER

A3030
ACCELERATOR

ACCELERATOR
MODE WITH
SPRINKLER
CONVERTER

There is considerable talk about Low Energy/Elevation Solutions for pivots these days. The need to save water and energy is greater than ever. Nelson Irrigation takes this charge seriously and would like to add the NELSON ADVANTAGE to the mix.

Hose drag, bubbler and spray technology qualify as LEPA and LESA so long as the outlet spacings are tight and the devices deliver water at low pressure. Nelson's U3030 can be used for both Part-Circle applications and hose drag applications. The Sprinkler Converter is a great device to get a 3-in-1 sprinkler. Choose between functions: bubble, spray or irrigate with rotating streams depending on water constraints.

Though offering the advantages of low pressure operation and minimal water loss due to canopy evaporation and wind drift, LEPA and LESA applications are limited. Limitations include: tight soils, sloping fields, and inner spans. Due to the very low pressure used, it is necessary to manage the system pressure and monitor it closely. Pressure regulators are generally a necessity for good uniformity of LEPA nozzle discharge.

There are other low energy/elevation options beyond LEPA and LESA. Consider rotating sprinklers in the 6-10 psi (0.4-0.7 bar) range. The Rotator® and Accelerator create a wide wetted pattern for the best soil infiltration and optimal droplet energy.

If you're looking for LE solutions — look to NELSON.



NELSON IRRIGATION CORPORATION

848 Airport Rd., Walla Walla, WA 99362 USA

Tel: 509.525.7660 Fax: 509.525.7907 info@nelsonirrigation.com

NELSON IRRIGATION CORPORATION OF AUSTRALIA PTY. LTD.

35 Sudbury Street, Darra QLD 4074 info@nelsonirrigation.com.au

Tel: +61 7 3715 8555 Fax: +61 7 3715 8666

WARRANTY AND DISCLAIMER: Nelson D3030 sprayheads are warranted for one year from date of original sale to be free of defective materials and workmanship when used within the working specifications for which the products were designed and under normal use and service. The manufacturer assumes no responsibility for installation, removal or unauthorized repair of defective parts. The manufacturer's liability under this warranty is limited solely to replacement or repair of defective parts and the manufacturer will not be liable for any crop or other consequential damages resulting from defects or breach of warranty. THIS WARRANTY IS EXPRESSLY IN LIEU OF ALL OTHER WARRANTIES, EXPRESS OR IMPLIED, INCLUDING THE WARRANTIES OF MERCHANTABILITY AND FITNESS FOR PARTICULAR PURPOSES AND OF ALL OTHER OBLIGATIONS OR LIABILITIES OF MANUFACTURER. No agent, employee or representative of the manufacturer has authority to waive, alter or add to the provisions of this warranty, nor to make any representations or warranty not contained herein.

This product may be covered by one or more of the following U.S. Patent Nos. 4796811, RE33823, DES312865, 5415348, 5409168 and other U.S. Patents pending or corresponding issued or pending foreign patents.